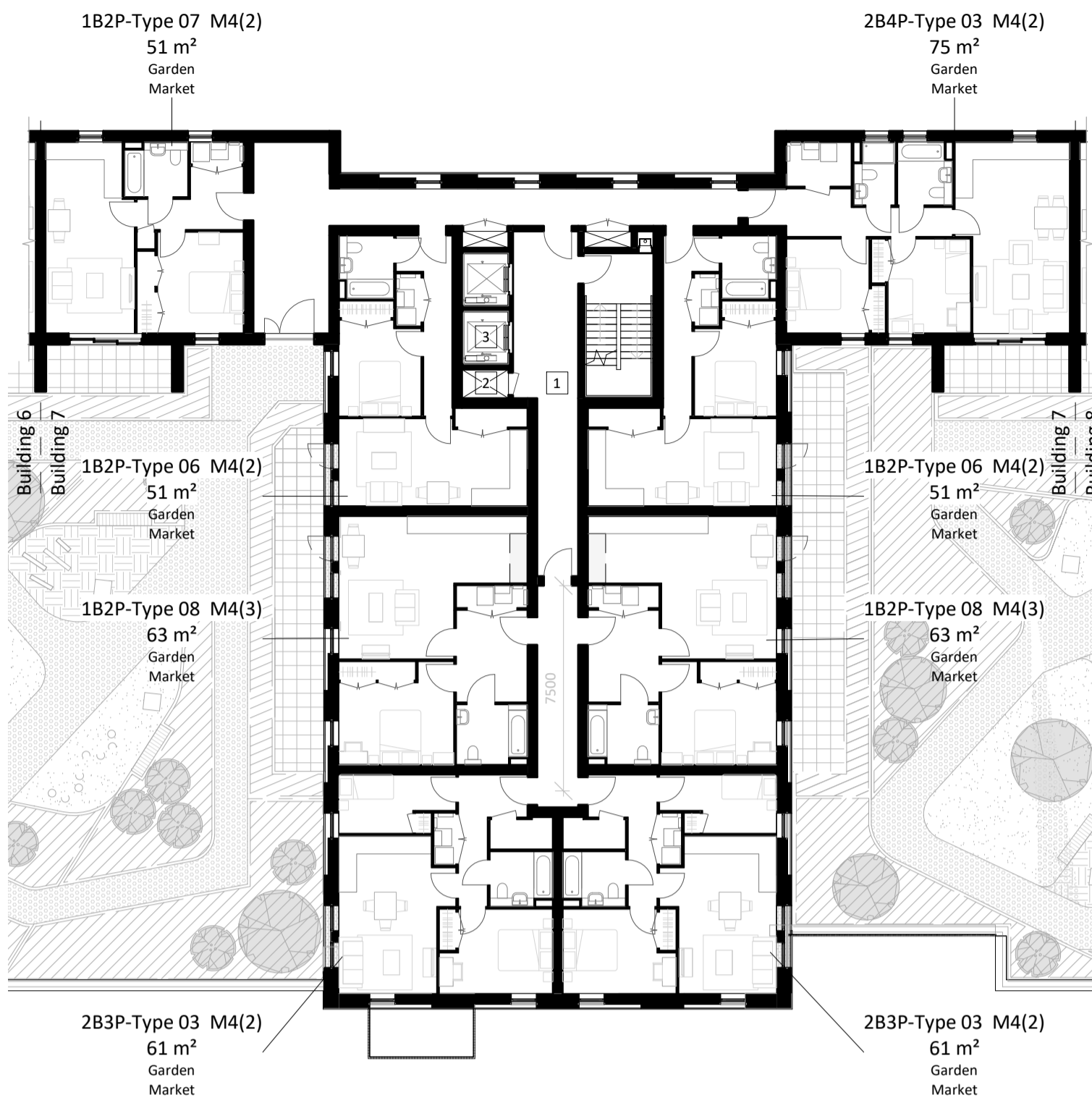
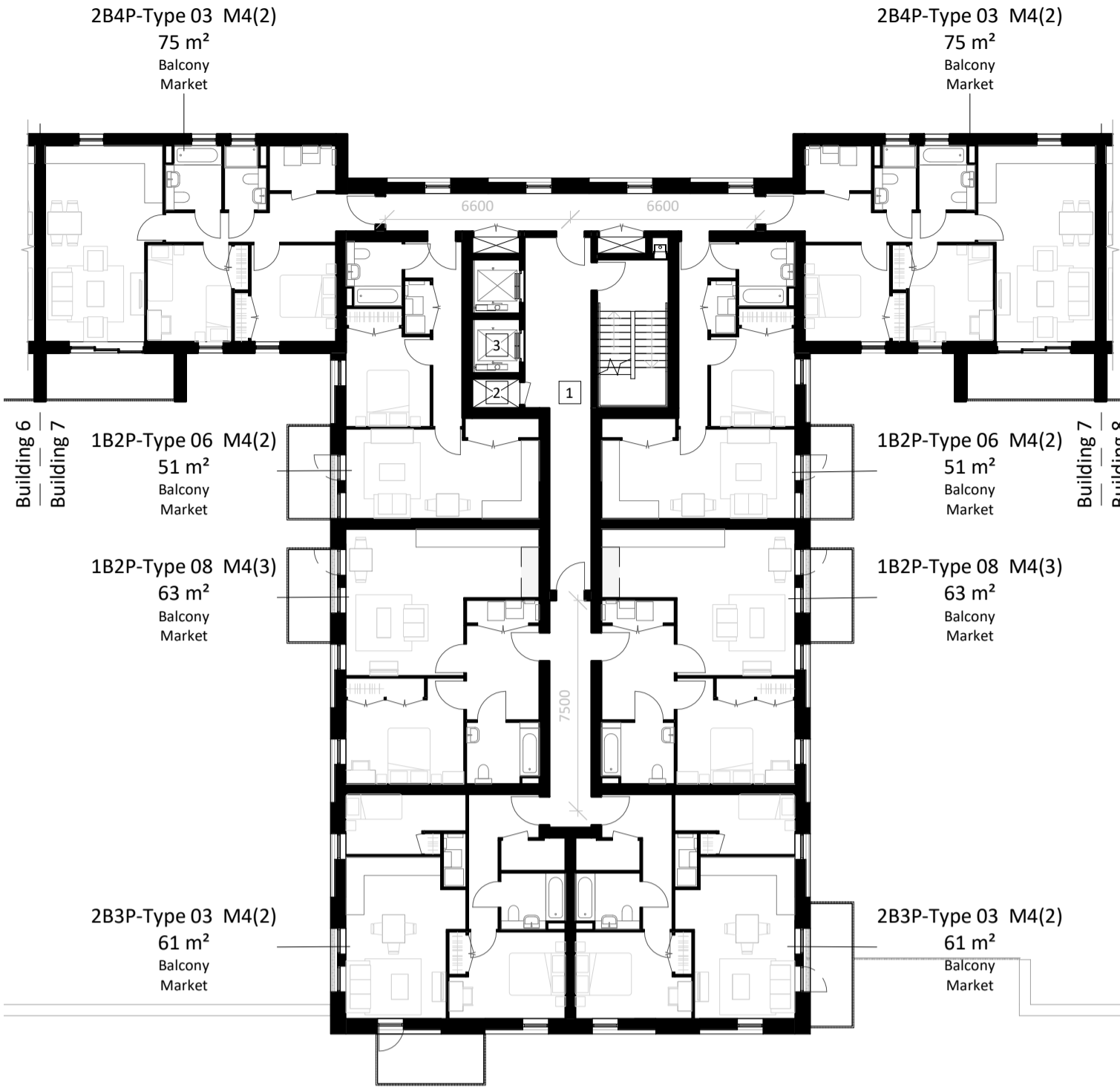


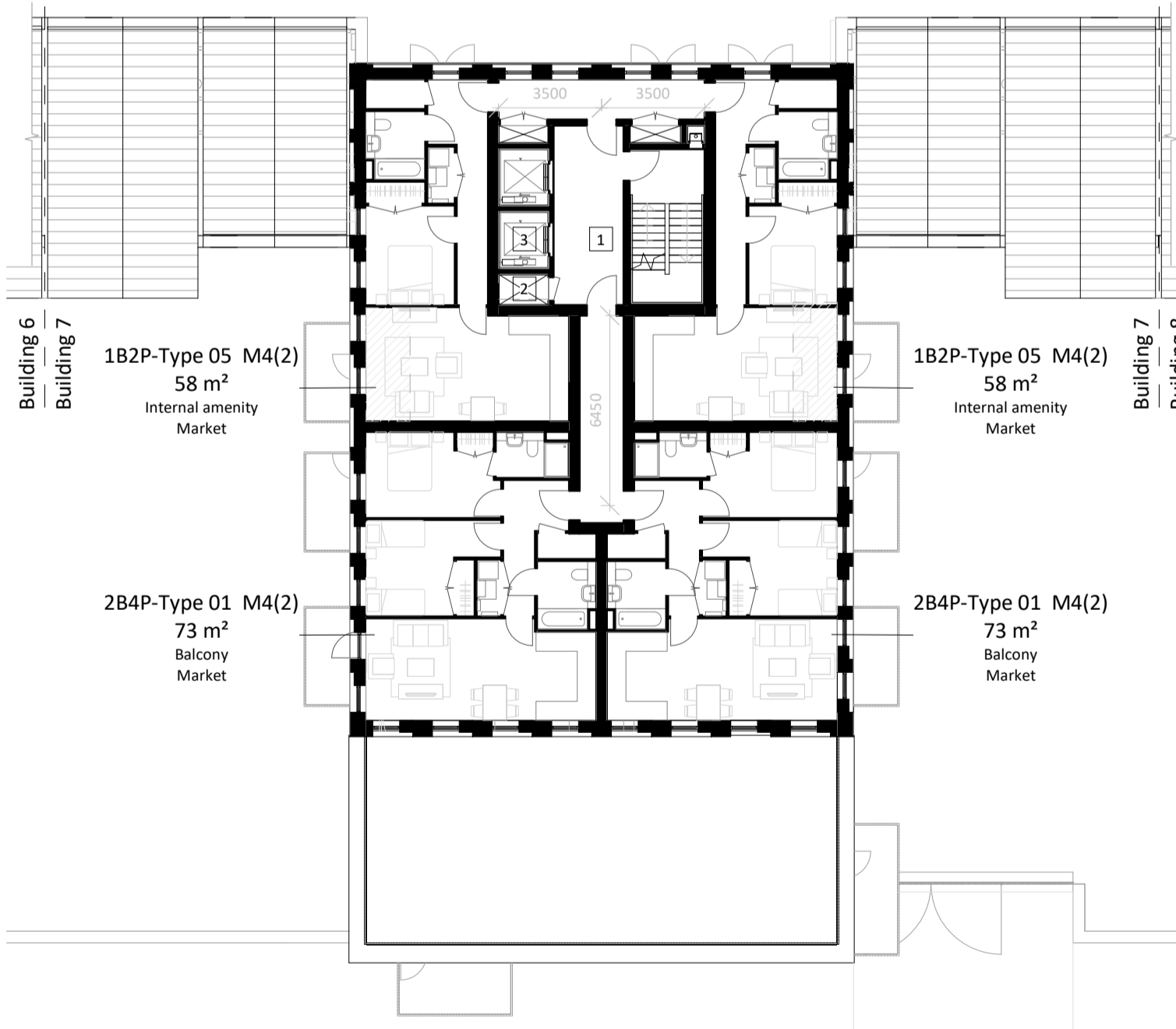
1 Building 7 - Ground Floor Plan  
1 : 200



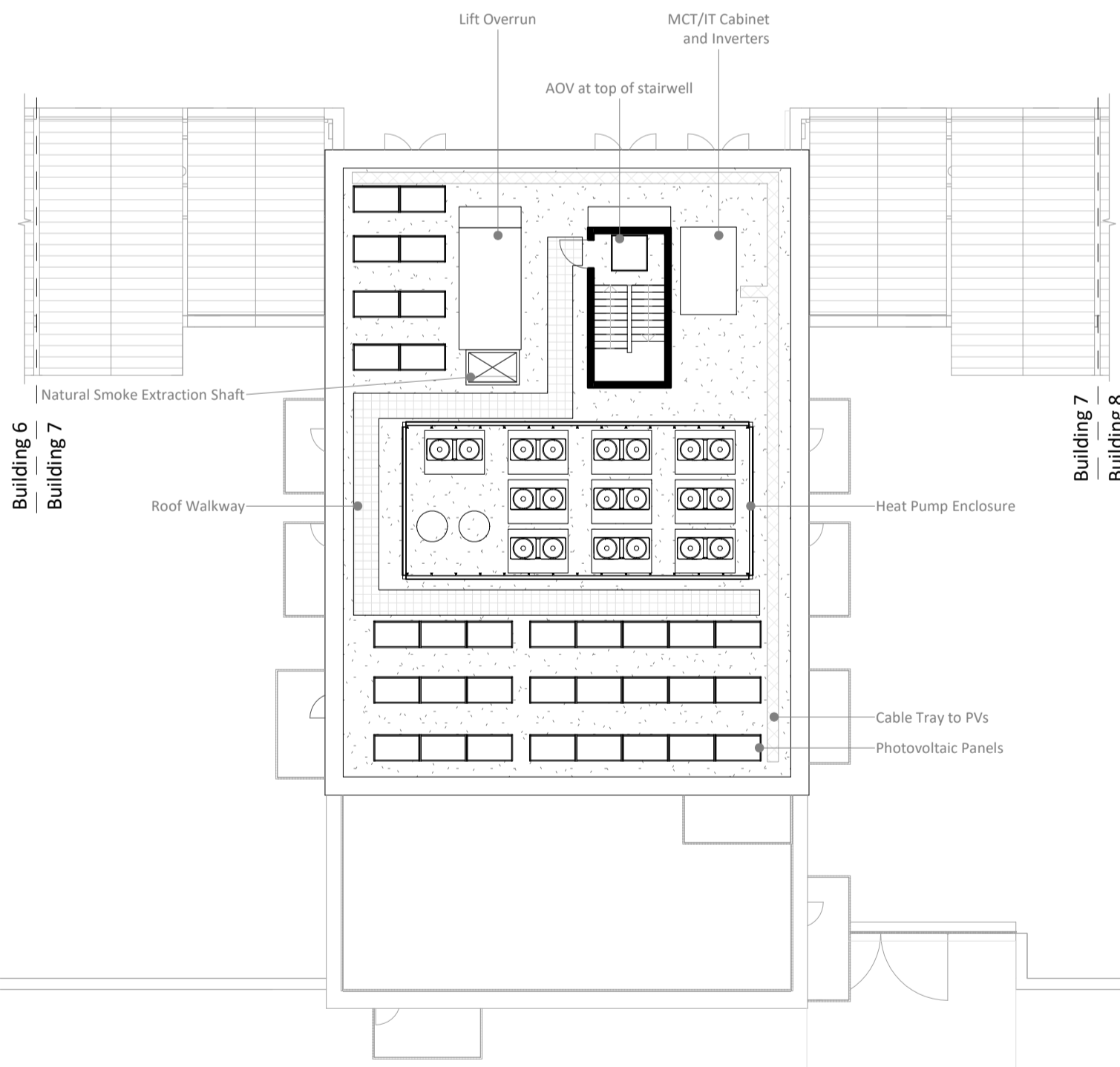
2 Building 7 - First Floor Plan  
1 : 200



3 Building 7 - Second to Fourth Floor Plan  
1 : 200



4 Building 7 - Fifth to Seventh Floor Plan  
1 : 200



5 Building 7 - Roof Plan  
1 : 200

NOTES

CONSULTANTS

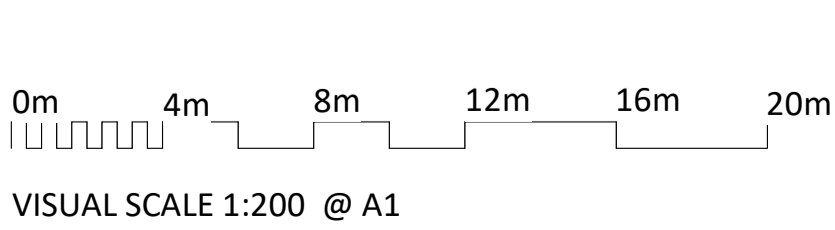
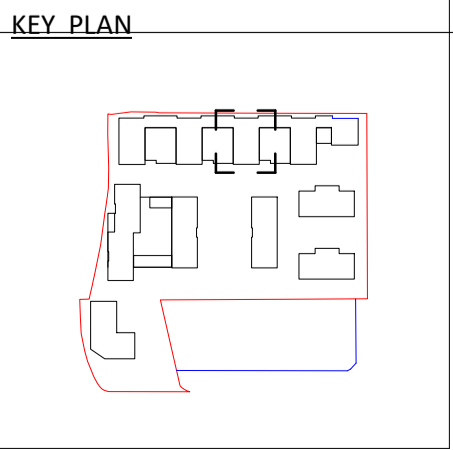
- Refer to highways consultant's drawings for details
- Refer to landscape consultant's drawings for details
- Landscaping layout is indicative only

AREAS

- Refer to area schedule

© Copyright Reserved. ColladoCollins Architects Ltd

Rev	Notes	Date	By	Auth
P1	DRAFT Planning Issue	19-08-30	CS	FvB
P2	Issue for Planning	19-09-05	CS	FvB
P3	Planning amendment	19-09-24	CS	FvB
P4	Update for GLA Application	20-04-07	OT	JBC
P5	Updated landscape plan	20-07-14	OT	MG



VISUAL SCALE 1:200 @ A1

LEGEND: FIRE SECURITY

- 1 Sterile ventilated staircase lobby
  - 2 AOV / Smoke shaft (min. 1.5m<sup>2</sup> section)
  - 3 Firefighting lift
- 4 Mechanical smoke extraction duct (min. 0.6m<sup>2</sup> section)
  - 5 Natural air inlet duct

ColladoCollinsArchitects

17-19 Foley Street  
London W1W 6DW  
T 020 7580 3490  
F 020 7580 2917  
info@colladocollins.com  
www.colladocollins.com

Date: 09/02/19  
Drawn By: CS  
Checked by: JBC  
Scale @ A1: As indicated  
Scale @ A3: 1 : 400  
CAD File No:

Inland Homes  
Hillingdon  
Building 7 - Floor Plans

PLANNING  
19011

P1(07)-100

P5  
Revision